



Read this First Collector

Features

Collector is a portable electronic device used to collect, store and transfer data from Guardus G3 or G5. The data transferring between Collector and PC is done through our software CommCenter.

Collector can store data from up to 510 Guardus units, so they can be transported and downloaded in any PC.

The data transfer to the PC is done by an interface with USB connection that comes with the Collector device.

CommCenter software sends the information received from a Collector to our software PROGuard, where you may see the reports. Data may also be generated in XML format.

System Requirements

- Pentium 300 MHz computer or higher.
- Installation of CommCenter version 3.6a or higher.
- Installation of PROGuard version 3.1 or higher.
- USB port available.
- Windows XP.

Composition

Collector is composed of an interface collect data and three indicators lights:



- **ON** – green light: Collector is active or in contact with Guardus.
- **COMM** – red light: Collector is communicating to Guardus.
- **BATT** – red light: indicates battery level.

Collector is powered by two AA – 1,5V common batteries.



On a side there is a Mini-USB port to connect to a PC:

Collecting data from Guardus

In order to start collecting data from Guardus units, please notice the following:

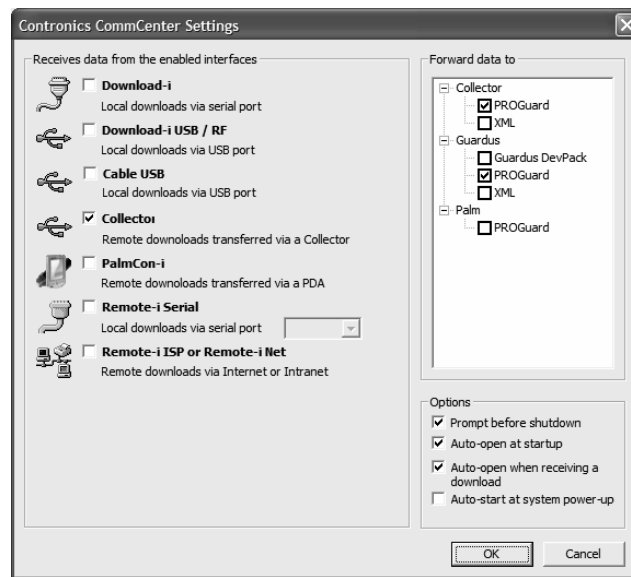
1. Place Guardus in touch with the Collector interface to start downloading data.
2. Wait for the red light **COMM**, and the sound **Success** (PLIM), indicating the start of communication.
3. Keep Guardus in the same position while the red light **COMM** flashes. It means that data is being transferred.
4. Listen to the sound **Restart** (three BIPS), indicating that data transfer is complete.
5. Wait until only the green light is **ON**.
6. Remove Guardus from the interface.

Configuration

NOTE: USB driver is installed automatically when connected to Windows XP.

1. Open CommCenter.
2. Click on **Menu, Interface settings**.
3. Select **Collector** checkbox.

- Select the checkbox that indicates where data should go: PROGuard, XML or both:

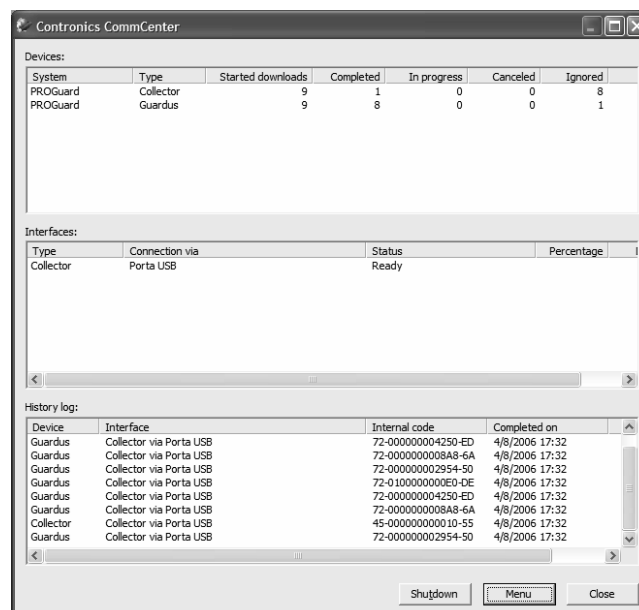


Transferring data to a PC

- Connect the Mini-USB cable to Collector and to the PC USB port.
- Wait while data is being transferred.

IMPORTANT: Please keep CommCenter running while data is being transferred to the PC.

- You may follow the activity on CommCenter:



- Wait until **COMM** red light is off, indicating that transfer is complete.

5. Remove Mini-USB cable from Collector.
6. Wait while Collector is being restarted before using it to collect more data. Lights will be flashing constantly while it's being restarted.

Understanding the lights

Collector flashes through indicators lights its status when active:

Flash	Meaning
Green light ON flashes every 5 seconds	Collector is active and waiting Guardus to be connected
Green light ON and red light COMM flashing	Collector starts communicating to a Guardus
Red light COMM flashing	Data is being transferred
Three lights flashing at the same time	Collector is being restarted
Green light turns ON	Collector is 100% full of data

Generating reports from downloaded data

Please view the reports on PROGuard:

1. Click **Last Download** on the main screen:



2. Click twice on the line **Collector**, in bold to view which Guardus devices were read.
3. Click twice on the line **Guardus**, in bold, to view and print reports generated from each Guardus that was read.